

Proton Beam Therapy: A patient Guide

Learn about the innovative and precise proton therapy from Advanced Medicine (Proton SG) with this comprehensive guide.

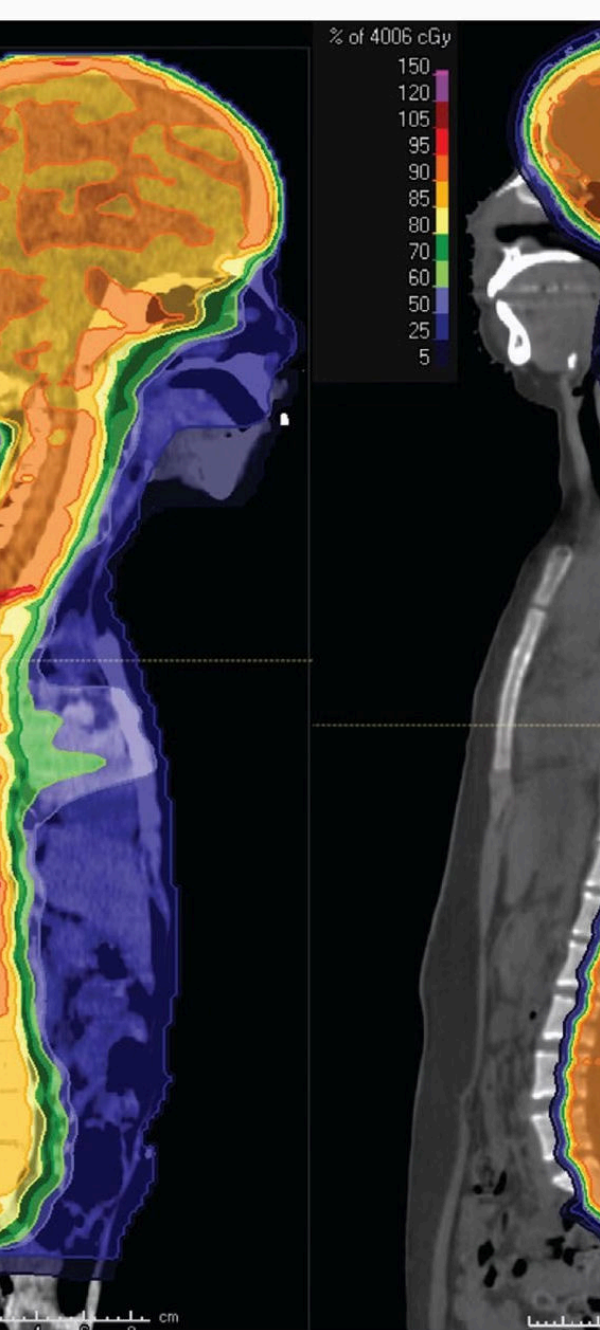
Contact us at frontdesk@proton.sg



How Proton Therapy Works

Proton therapy precisely targets tumors while minimizing damage to healthy tissues, revolutionizing cancer treatment. The ProBeam® proton therapy system allows us to target tumors with unprecedented precision thanks to its use of high-definition pencil beam scanning and best-in-class imaging.





Advantages of Proton Therapy

1 Precision Treatment

Pencil beam scanning ensures high precision in delivering proton therapy directly to the tumor.

2 Reduced Side Effects

Proton therapy may offer fewer side effects than traditional radiotherapy, enhancing patient comfort.

3 Efficient Treatment

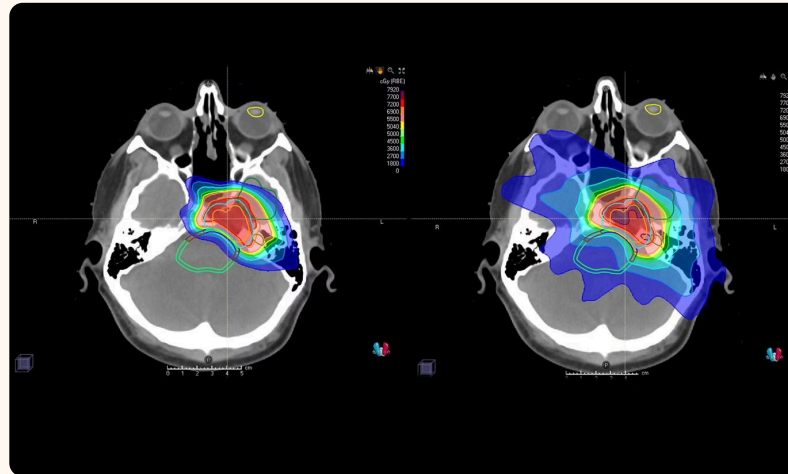
Reduced treatment times and non-invasive procedures make proton therapy efficient and convenient.

Types of Cancers Treated

- Liver cancer
- Lung cancer
- Central nervous system tumors
- Head & neck cancers
- Esophageal cancer
- Breast cancer
- Pancreatic cancer
- Prostate cancer
- Pediatric tumors
- Recurrent cancers

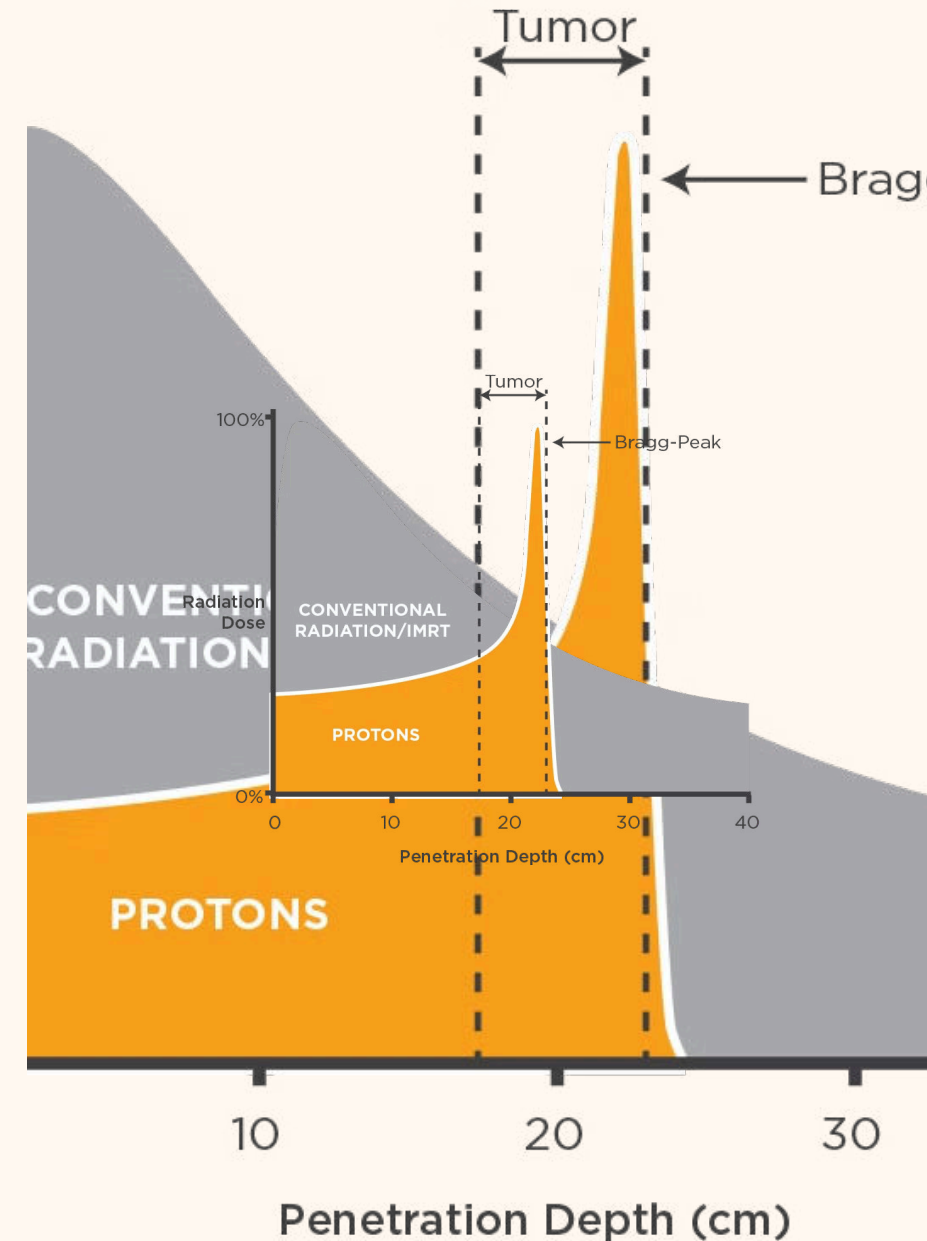
Proton Therapy vs. Photon Radiotherapy

Proton therapy's unique stopping power minimizes damage to healthy tissues, making it ideal for treating recurrent tumors, cancers in children, and those near vital structures.



Accurate Precision with Proton Therapy

The ProBeam® system at Advanced Medicine offers unmatched precision by sculpting doses to conform to the tumor's complex shape while minimizing damage to healthy tissues.



Less Risk of Secondary Cancers

With proton therapy, there is a reduced risk of developing secondary cancers compared to traditional radiotherapy methods. This is especially for childhood cancers as these patients have decades of years of survivorship ahead of them, and growing tissues are more sensitive to radiation.

Considerations for Treatment

- Consultation with healthcare team
- Proper positioning required for treatment
- Treatment duration and scheduling

Careful Positioning with Proton Therapy

Varian's imaging system offers precise positioning of the beam, allowing the targeting of tumors adjacent to critical body structures with high accuracy.

